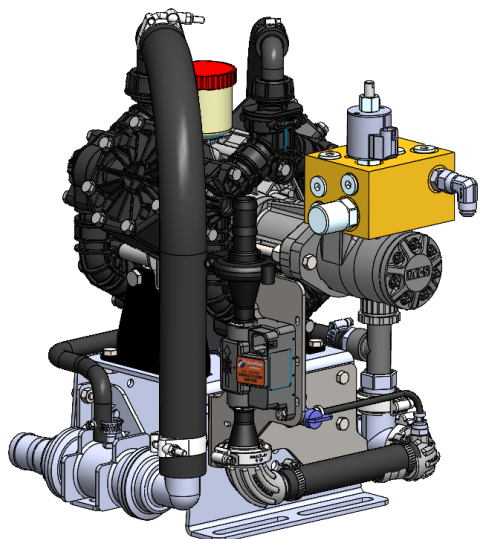


396-6696Y1 PR17 Electromagnetic Flowmeter Update

Part Info Sheet



0.2 - 24 GPM Orion 3 DN10 Flowmeter P/N 204-01-462032A-DN10



6-Pin Deutsch connector

Use adapter 201-5954Y1 to connect to 3-pin AMP Superseal harness.

OR Alternate adapter 201-6647Y1 to connect to 3-pin MP Shroud

Note: At flowrates above 17 GPM there will be in excess of 15psi of pressure loss through this meter.
24GPM of water = 30psi of pressure loss

Controller- Flow Cals are listed in Pulses per Gallon unless noted	DN10 .2-24 GPM Flow Cal Number	DN10 .2-24 GPM Flow Cal Number with Divide by 8 Cable
Sentinel	4542	568
Commander	Requires Divide by 8 Cable	1136
Commander II	9084	1136
John Deere	4542	568
Ag Leader	4542	568
Trimble	4542	568
Raven	4542	568
Topcon	4542	568
Case (ECU) Pulses per 10 Liters	Requires Divide by 8 Cable	1499
Case (UCM) Pulses per Liter	1199	150

Orion 3 Flowmeter will need to adapt from the 6-Pin Deutsch to the flowmeter plug on the harness. These adapters are listed on page 2.

The "Divide by 8" adapter harness must be used in applications where the controller will not accept the required flow cal number. The "Divide by 8" adapters listed on the next page could be on your system and will need to use the above flow cal number associated with your controller.

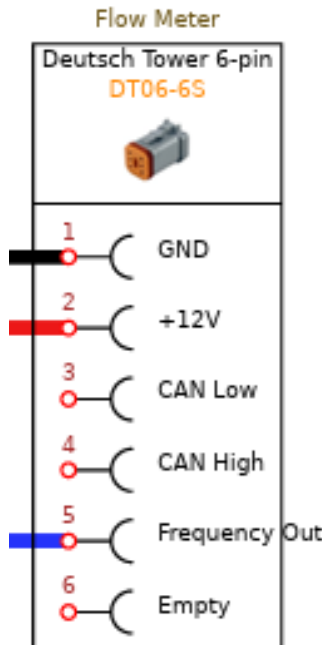
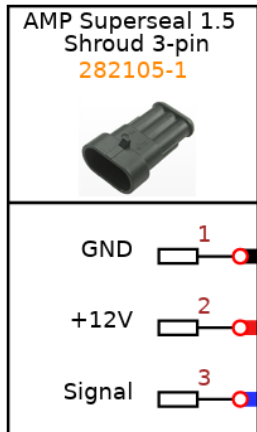
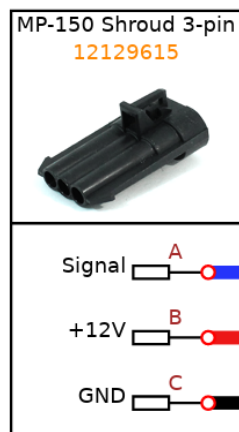
396-6696Y1 PR17 Electromagnetic Flowmeter Update

Part Info Sheet



0.2 - 24 GPM Orion 3 DN10 Emag Flowmeter P/N 204-01-462032A-DN10

Adapter Part Number	Description	Uses
201-5954Y1	3-Pin AMP Superseal Shroud to 6-Pin Deutsch Tower	Pump final cable to Orion 3 Flowmeter
201-6647Y1	3-Pin MP Shroud to 6-Pin Deutsch Tower	Pump final cable to Orion 3 Flowmeter used on Commander II and E-Mag Flowmeter with Blue Sticker and White Lettering.
Divide by 8 Adapters	The "Divide by 8" adapter harness must be used in applications where the controller will not accept the required flow cal number.	Could be on your existing system and will need to use correct flow cal from chart on previous page.
201-14226	3-Pin MP Shroud to 3-Pin MP Tower with divide by 8	Multiple Controllers
201-17842	3-Pin MP Shroud to 3-Pin AMP Superseal Tower with divide by 8	Multiple Controllers
201-19849	3-Pin AMP Superseal Shroud to 3-Pin AMP Superseal Tower with divide by 8	Used commonly with Case Planter with ECU



Adapter Harness Connections Shown to the Left.

201-14226 -Shown with divide by 8 module circled.



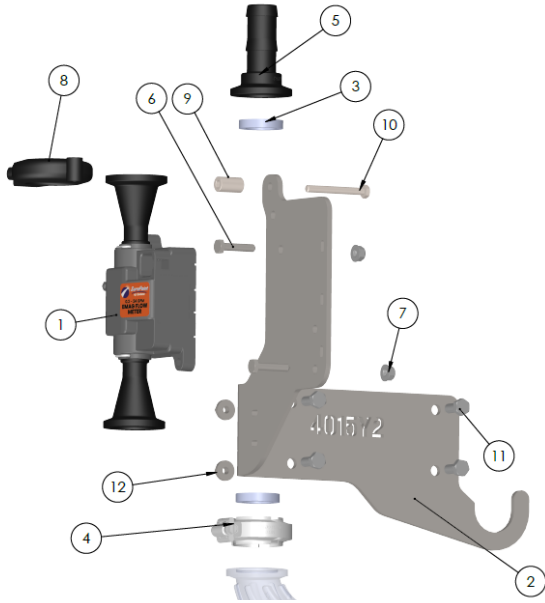
SurePoint recommends you perform a catch test to verify the system is properly installed and configured. Adjust the flow cal as needed based on accurate catch tests with the actual product or

Warning!!!

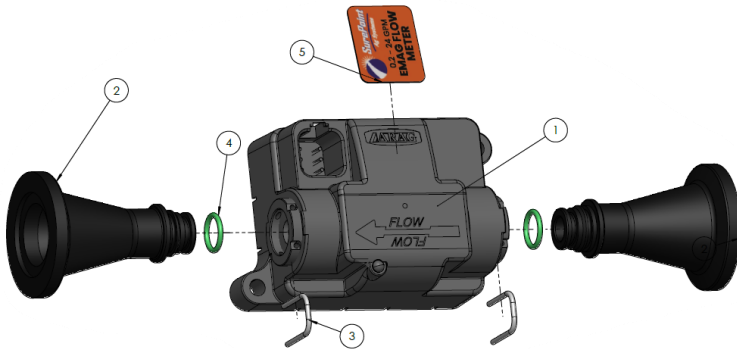
-Before doing any welding on the implement, unplug the cable to the flowmeter, or damage to the flowmeter may result.

-Do not power wash the flowmeter. High pressure spray directed at the back edge of the face plate or at the wire connector may allow water into the flowmeter electronics.

Parts List and Exploded View



ITEM #	Part Number	Description	QTY
1	204-01-462032A-DN10	Flowmeter Assembly, Orion3 Emag, 0.2 - 24 GPM, M100 Flange	1
2	410-4015Y2-BK	FM Support Bracket - PR17 and PR30	1
3	105-100G-H	1" EPDM Manifold Gasket	2
4	105-FC100	1" Manifold Clamp	2
5	105-100BRB	1" Manifold x 1" HB	1
6	300-040108-SS	1/4" x 1-1/2" Hex Head Bolt - SS	2
7	323-04-SS	1/4" Flange Nut - SS	2
8	105-UFC100	1" UF Clamp	1
9	400-6633Y1	Spacer Bushing, Steel 1/2"OD x 1/4" ID x	1
10	300-M655MM-SS	M6 x 55mm, Hex Flange Head Bolt - SS	1
11	300-050012-SS	5/16" x 3/4" Hex Head Bolt - SS	4
12	323-05-SS	5/16" Flange Nut - SS	4



ITEM #	Part Number	Description	QTY
1	204-01-462032	Flowmeter, Orion3 Emag, 0.2 - 24 GPM, T1F Connection	1
2	120-M100T1M	Flange Fitting, M100 x T1M Fork Fitting	2
3	124-02-010001	T1 Fork	2
4	124-01-G11056-V	Viton O-Ring for T1 Fittings	2
5	398-20-6313Y1	Decal, EMAG (Orion 3) Flowmeter 0.2—24 GPM	1