

# LESS TIME LOADING MEANS MORE TIME SPRAYING

## Eductors for Manual Products

QuickDraw Swing Down Eductor allows operator to work on the ground level. Add manual measured products including dry AMS through the Swing Down Eductor.

QuickDraw Chem-Blade Eductor features the Chem-Blade for splitting, dumping, and rinsing jugs. Add manual measured products including dry AMS.



## LESS TIME LOADING = MORE TIME SPRAYING

### Top 5 Things Users Say About Their QuickDraw:

- #1.** "It's fast! I can spray an extra batch in the day. Some days two."
- #2.** "It's clean! I can spray all day and not touch any chemical."
- #3.** "Automated batch calculation is awesome. Makes it fast and accurate to mix a batch of any size."
- #4.** "The mass flow meter is spot on regardless of what product I am using."
- #5.** "I wish I'd have bought it three years earlier."

**CONTACT YOUR DEALER, OR LEARN MORE:**  
[www.SurePointAg.com](http://www.SurePointAg.com)

394-5735Y1



866-626-3670

[www.SurePointAg.com](http://www.SurePointAg.com)

#SurePointAg



# QuickDraw Spray Tender System

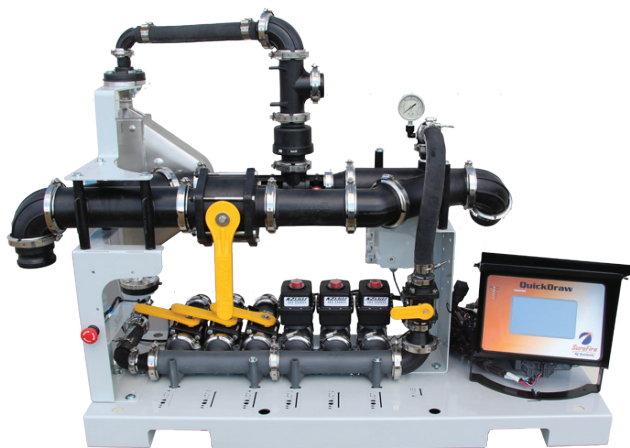
## QuickDraw Max & QuickDraw Lite



### QuickDraw Max

Is a fully automated sprayer tender system. Start by creating a recipe- that is the applied application rates/ acre for each chemical in the batch. Recipes are saved and used every time you load that mix of chemicals. Enter the application rate/acre you will be spraying and the size of load you need, either in total gallons or total acres to spray. QuickDraw calculates the correct amount of each chemical in the batch. Press start, QuickDraw automatically measures and loads each chemical as well as the correct amount of carrier and stops the pump when the batch is complete.

**Mix and Load a 1000 Gallon Batch in Under 8 Minutes.**



### QuickDraw Lite

provides mass flow measurement of chemicals with refined features and operation. QuickDraw Lite is a manual or semi-automated spray tender system. In manual operation open a product valve, watch the display until the desired chemical amount has been measured into the sprayer and close the product valve. In semi-automated operation enter the desired chemical amount, press start. When the set point is reached, the product automatically closes.



## FEATURES & CONFIGURATIONS

Closed Transfer System Eliminates Exposure



- **Venturi Suction** – Transfer pump is located on the QuickDraw inlet. It pushes water across a venturi to create suction which draws chemical products through the mass meter and into the batch.
- **Pump Suction** – Transfer pump is located on the QuickDraw outlet. Suction from the pump is utilized to draw chemical products through the mass meter and into the batch.

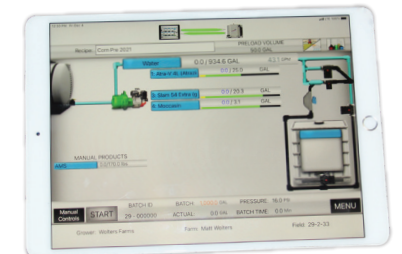
### Mass Flow Meter Chemical Measurement

- **Mass Flow Meter Chemical Measurement** – Micro-Motion mass flow meter requires no calibration. The mass flow meter measures product density, liquid mass and volume. As a result, it is able to measure any liquid with extreme accuracy regardless.
- **3" E-Mag Carrier Flow Meter Auto Calibration Process** – Uses mass meter to calibrate carrier flow meter.
- **Closed System** – QuickDraw is a closed system. Operator exposure to chemical is eliminated while mixing sprayer batches. Operators using a QuickDraw system routinely comment that the reduced exposure to chemicals is a huge benefit.



### iPad App

Use the QuickDraw iPad App to operate the system remotely (within WiFi Connection Range approx 100').



The QuickDraw App keeps a record of every batch loaded. Included data:

- Temperature
- Chemical Name(s)
- EPA ID Number
- Amount of Chemical Loaded
- Tote/Shuttle ID (Inventory Tracking)
- Unique Batch ID
- Date and Time Loaded
- Batch Time (Length)
- Farm and Field ID
- Wind Speed and Direction

### Automated Batch Calculation

All you have to do is enter acres or total gallons, sprayer application rate, and chemical rate per acre. QuickDraw then calculates the amount of each chemical in the batch, including manually added chemicals. Create recipes through the integrated touch screen display, or enter them at your convenience on an iPad and transfer them to the controller later through the built-in wifi connection. Recipes are saved in the controller, making batches easily repeatable!