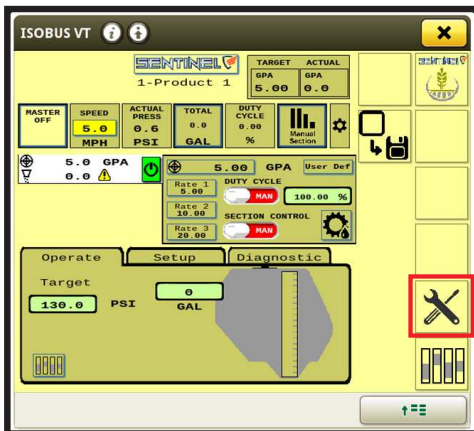


1. 396-02-7669

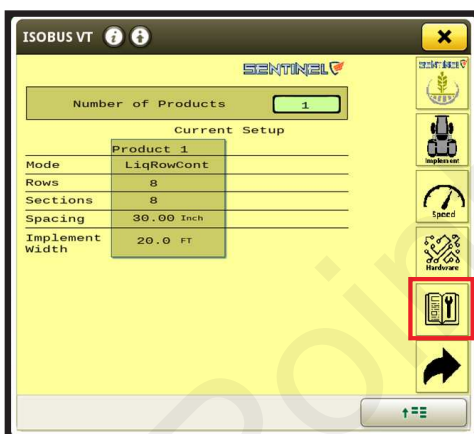
Sentinel 1000 Liquid Servo Control

The Sentinel Rate Controller will need to be setup when controlling liquid servo valve. Follow these steps to complete the configuration of your Sentinel system.

1. Select the Setup tab.



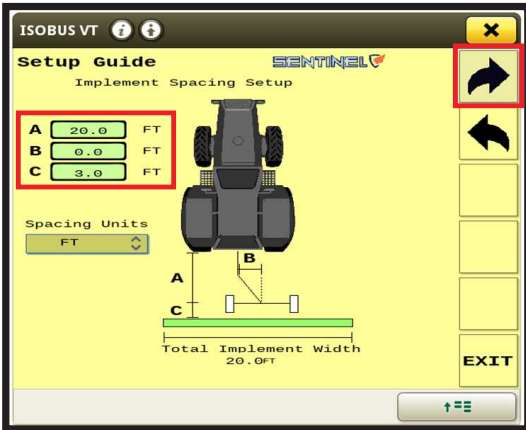
2. Select the Wizard tab.



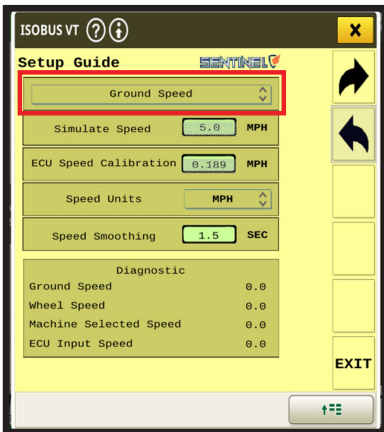
3. For Standard units (ft, acre), select Imperial. Press the forward arrow.



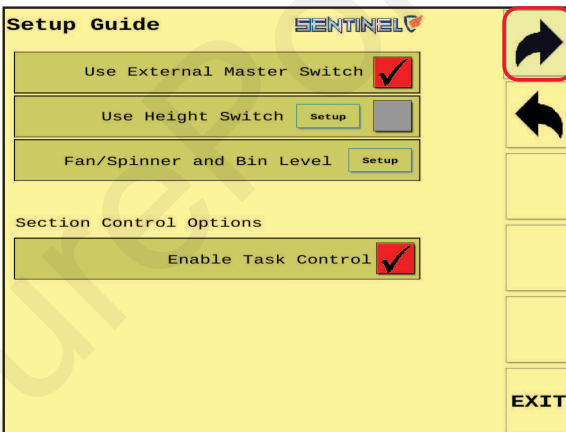
- Enter correct dimensions (A, B, C) for the implement being used. Press the forward arrow.



- Ground Speed Source should be selected. Press the forward arrow.



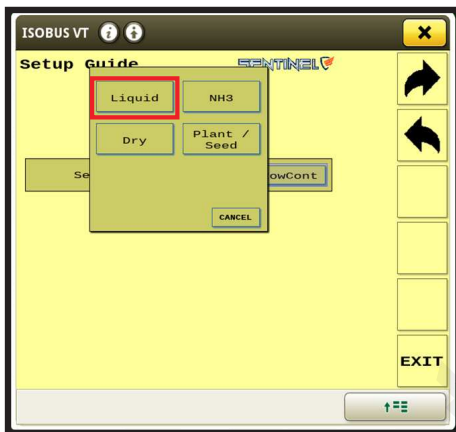
- Select the appropriate options for System Start/Stop. Enable Task Control if documentation/mapping, section control, and variable rate is desired. Must also activate Task Control in the display. Press the forward arrow.



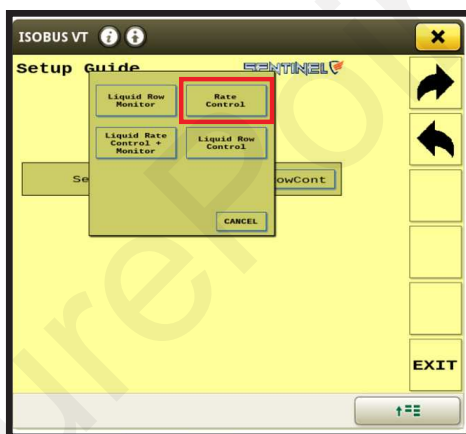
7. Press the Sentinel Mode tab.



8. Select the Liquid tab.



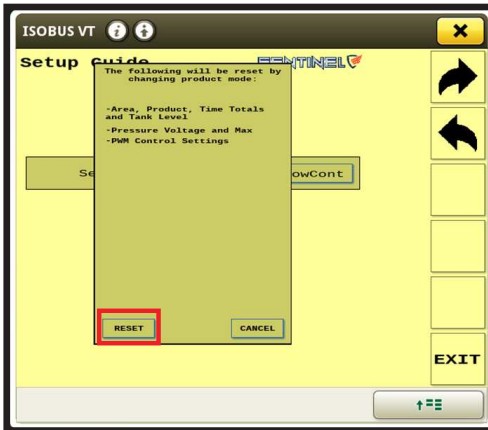
9. Select Rate Control.



NOTE

Liquid Rate Control + Monitor may be selected if Sentinel Row Flowmeters are present.

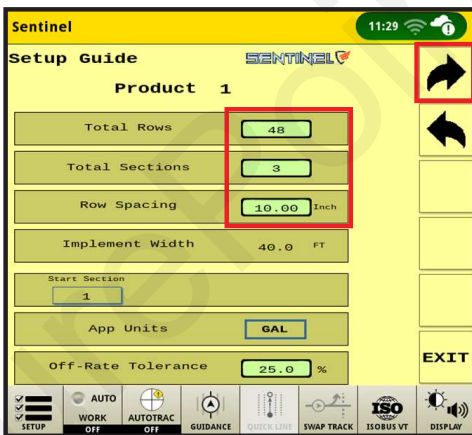
10. Press Reset.



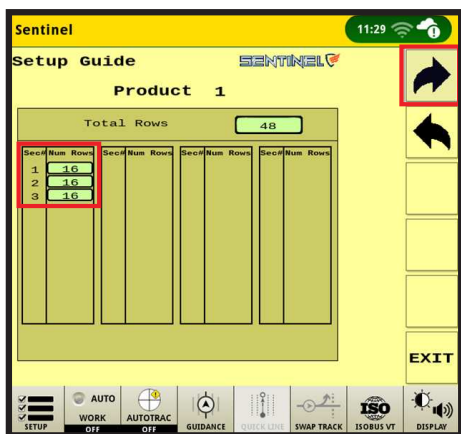
11. Sentinel Mode should now read Liq Rate Control. Press the forward arrow.



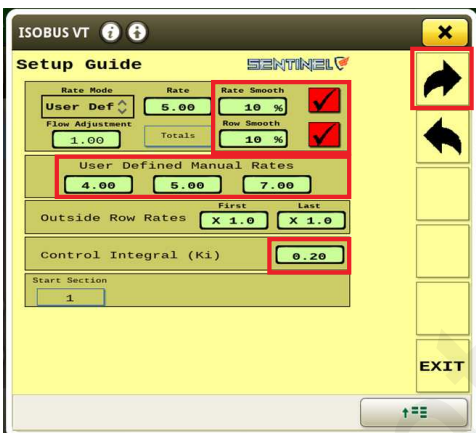
12. Enter correct number of rows, sections, and spacing. Press the forward arrow.



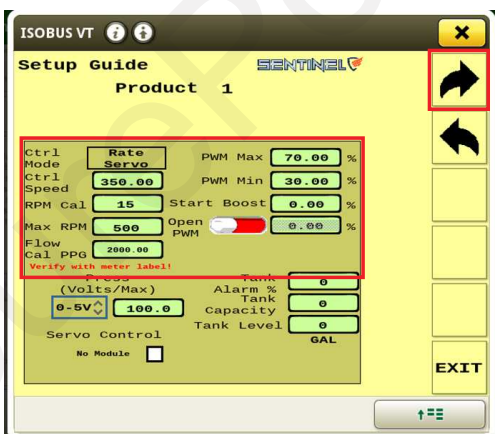
13. Confirm rows per section. Press the forward arrow.



14. Set Rate Smooth and Row Smooth to 10%. Enter User Defined Manual Rates. Control Integral set to 0.20. Press the forward arrow.



15. Adjust all settings as shown. Ctrl Mode: Rate Servo. Ctrl Speed: 350. If rate is fluctuating above and below target, decrease value by 25 units at a time to fine tune the system. If rate is slow to reach target, increase value by 25 units at a time to fine tune the system. Optimal setting will lock on desired target rate.



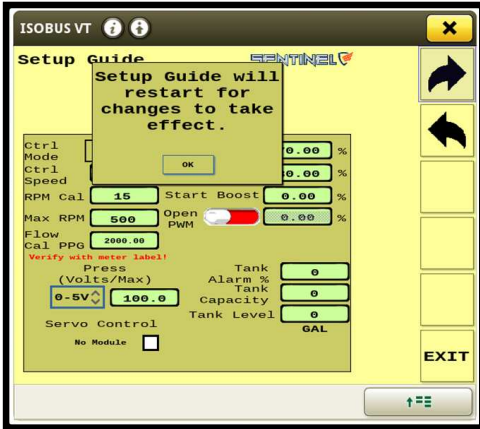


NOTE

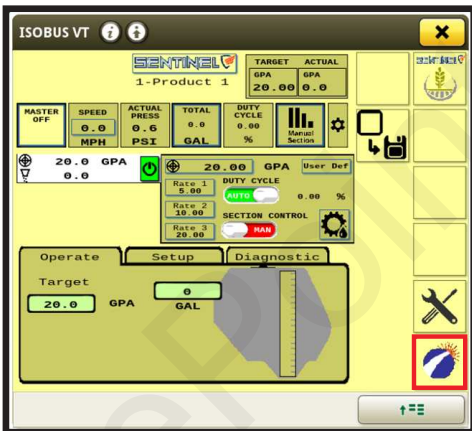
PWM Max: 70 (not to exceed 97) PWM Min: 30 Start Boost: 0 Open PWM: Red (off) Flow Call PPG: Use flow meter cal (Pulses per Gallon) number located on flow meter. Press forward arrow.

If control valve does not move when trying to control, raise the PWM Min by 5 units a time until it moves.

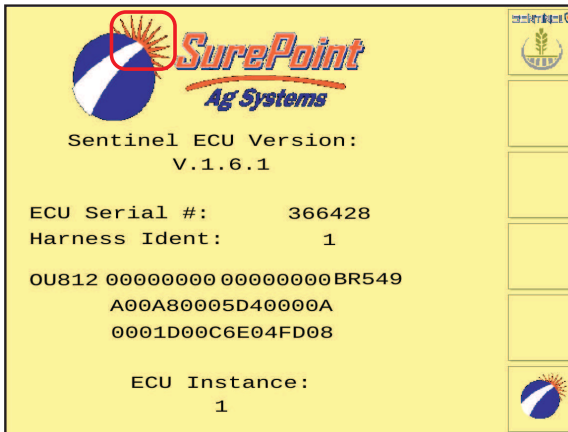
16. Press OK to restart for changes to the controller. The Sentinel will reboot.



17. Press the SunBurst Logo.



18. Press the Orange SunBurst to access the Auxiliary settings screen.

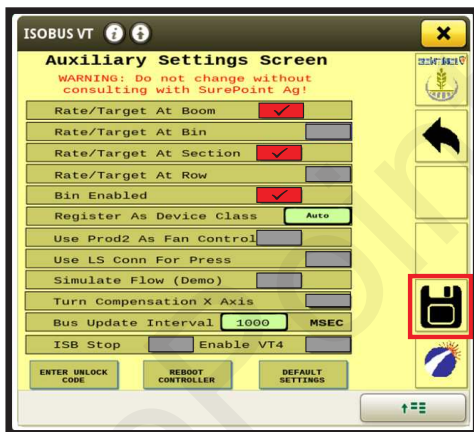


19. Select all as depicted for John Deere Gen4/G5 display operation. Press the Save data tab. The Sentinel will reboot.

TIP

If using John Deere 2630, select *Rate/Target at Bin*, and *Bin Enabled* only.

If using AgLeader InCommand 800/1200, select *Rate/Target at Bin* and *Bin Enabled* only.



20. To test system, enter a test speed, Section Control is off, select Rate turn Master on.

