



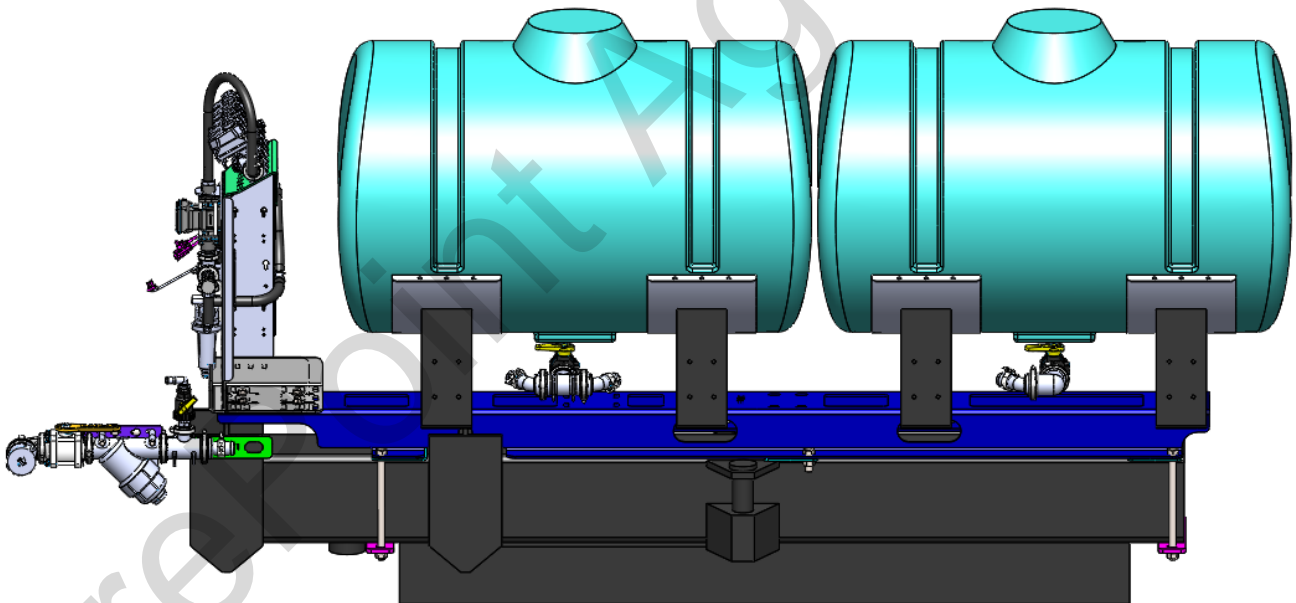
# 396-001830

## **Tank Mounting Instruction 25' & 30' Drills Without Markers Double 150 Gallon Tanks**

Drill Manufacturer:

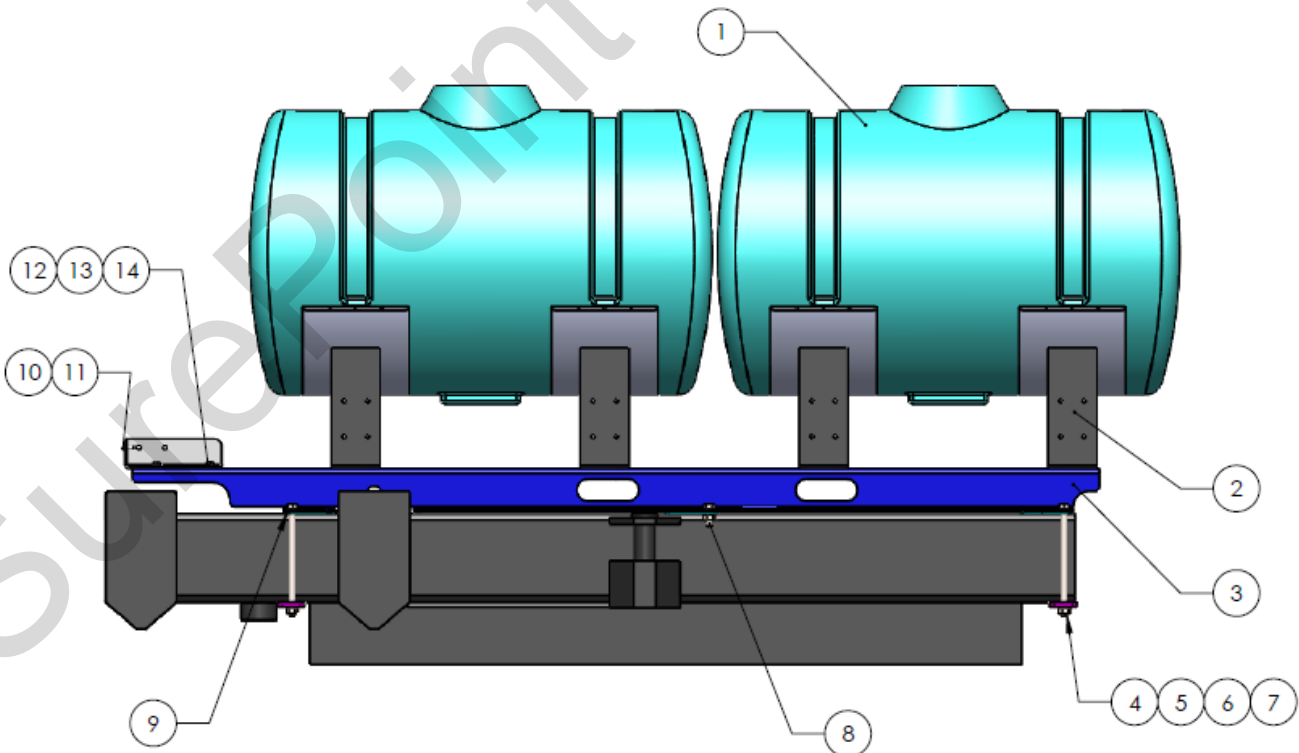


Kit Number: 551-02-102200



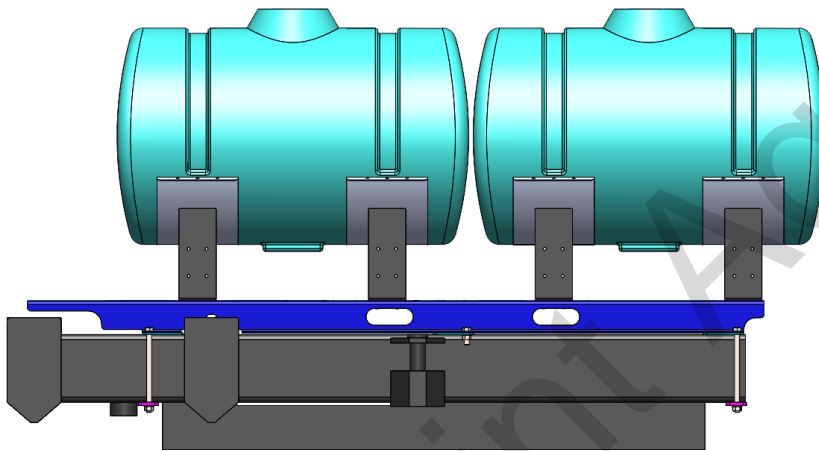
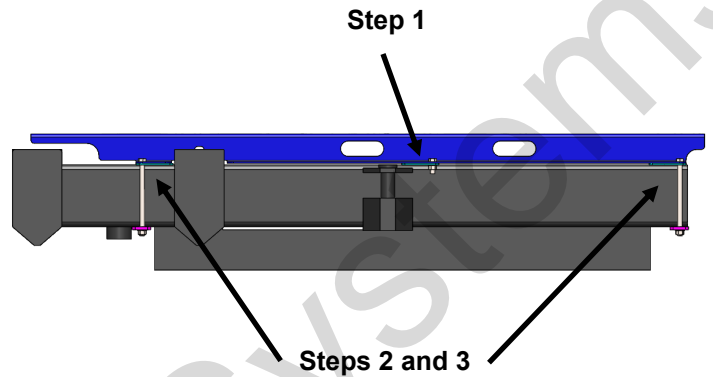
# Parts List

ITEM NO.	PART NUMBER	DESCRIPTION	QTY.
1	727-02-HZ0150-32-W	150 Gallon 32" Tank	2
2	420-1107A1-BK	Black 32" Saddle	4
3	451-2395Y2	Attachment Bracket for CrustBuster	1
4	300-121200-5	3/4" x 12" HCS G5	4
5	320-12	3/4" Nut	6
6	330-12	3/4" Flat Washer	6
7	451-2545Y1	Backer Plate for CrustBuster	2
8	300-120200-5	3/4" x 2" HCS G5	2
9	451-2544Y1	Bottom Support Plate for CrustBuster 451-2395Y1	3
10	410-2057A2	Tower Mounting Bracket	1
11	384-1080	3/8" Hardware Kit - Carriage Bolts and Nuts	1
12	323-08	1/2" Flange Nut	20
13	330-08	1/2" Flat Washer	20
14	300-080108-5	1/2" x 1-1/2" HCS G5	20
15	525-2055	2" Tank Strap Kit	4

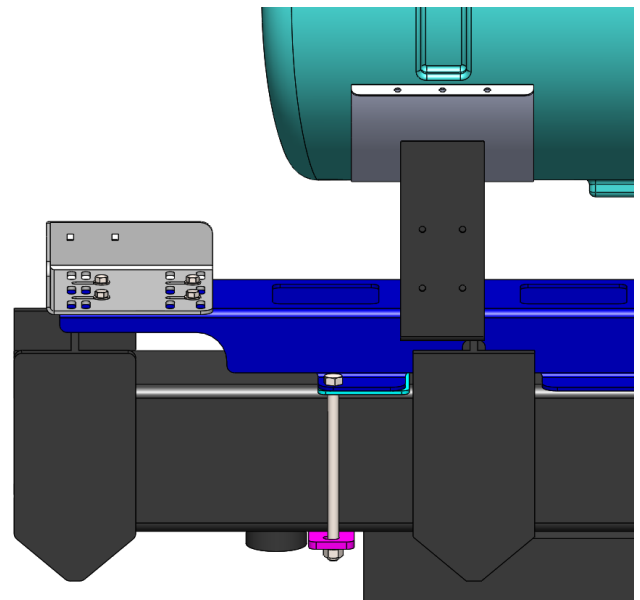


# Step by Step Instructions

1. Bolt center support plate to attachment bracket using short 3/4" bolts.
2. Position attachment bracket on frame with remaining support plates in position under each end.
3. Bolt attachment bracket in place using backer plates and long 3/4" bolts.



4. Loosely bolt tank saddles to attachment bracket using 1/2" bolts, washers, and flange nuts.
5. Position tank in saddles, and strap in place using tank straps. **Use the included shorter bolts to keep the tank buckle from hitting the seed boxes when folded.**
6. Tighten all 1/2" bolts in place.



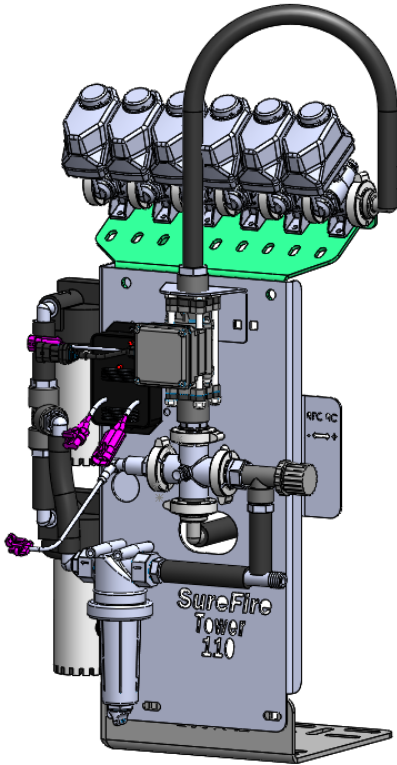
7. Bolt tower mounting bracket to attachment bracket in front of tank using four 1/2" bolts, washers, and flange nuts. Tower will bolt to this bracket with 3/8" carriage bolts.



## Optional/Related Items

### Tower Pump Kit

Instruction sheet for this kit: 396-001420

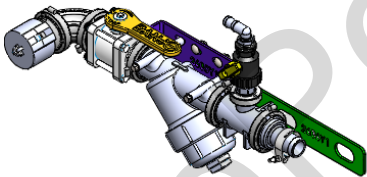


The electric pumps on the Tower are fed with 3/4" hose from the valve on the plumbing kit below.

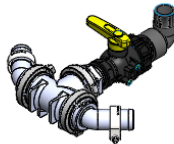
### Tank Fill and Discharge Kit

Kit Number: 555-2000

Instruction sheet for this kit: 396-2608Y1



The fill kit provides a 2" male cam adapter fill point and 3/4" hose barb to feed electric pumps in the Tower above.



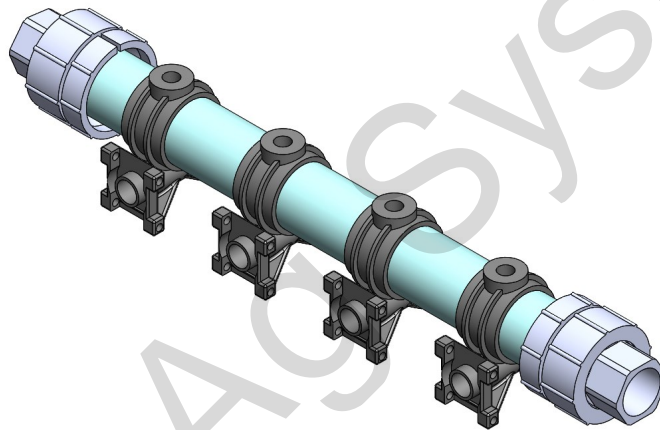


## Optional/Related Items

### Manifold Kits:

Instruction sheet for this kit: **396-001750**

<b>553-02-25000:</b>	25' 7.5" spacing
<b>553-02-25500:</b>	25' 10" spacing
<b>553-02-30000:</b>	30' 7.5" spacing
<b>553-02-30500:</b>	30' 10" spacing



### Stainless Steel Tubes:

270-93CBAP (left)

-Places fertilizer before press wheel

270-CB-RD (below)

-Places fertilizer behind press wheel

