



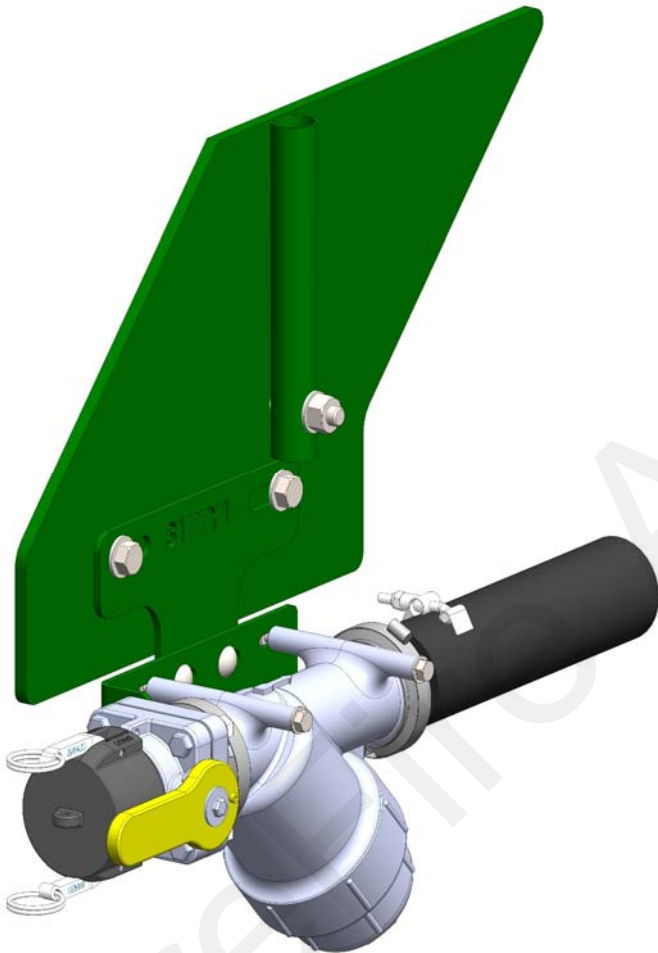
# 396-3178Y1

## John Deere DB and 1775 Series Planter Fill Kit Installation Instructions

Planter Manufacturer:

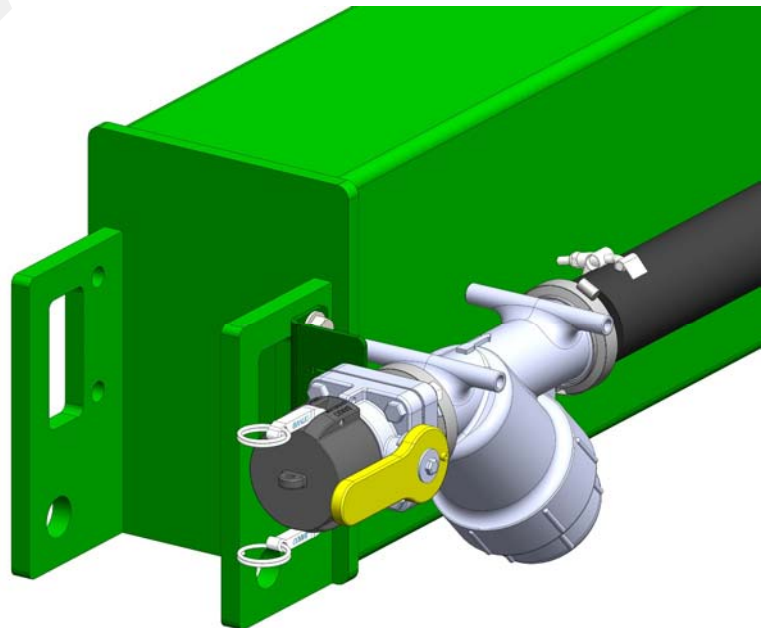


**JOHN DEERE**



**Kit Number: 520-00-101710**

**Kit Description:** John Deere Planter  
Fill Kit - CCS w/o rear hitch



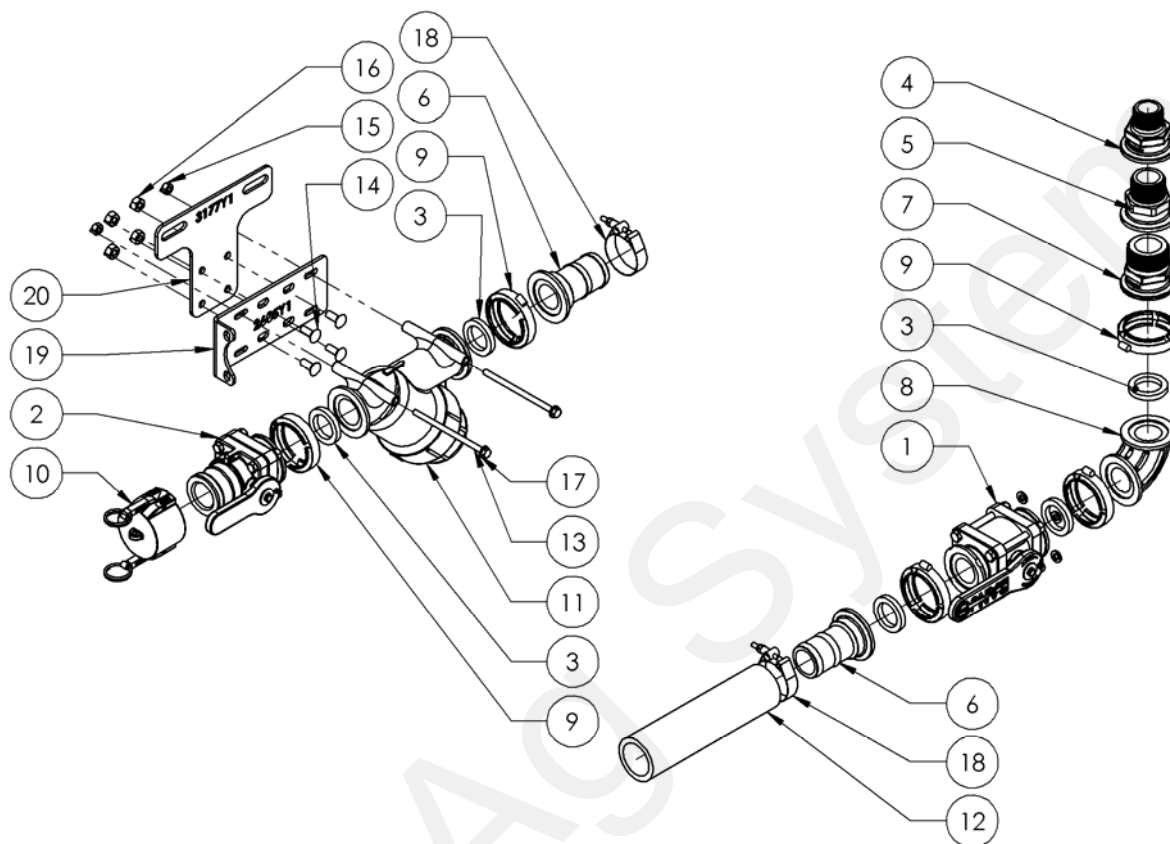
**Kit Number: 520-00-101720**

**Kit Description:** John Deere Planter Rear  
Hitch Fill Kit



# Parts List and Exploded View

## Kit: 520-00-101710



ITEM NO.	PART NUMBER	DESCRIPTION	QTY.
1	102-200MVCF	2" Manifold Standard Port Poly Valve	1
2	102-200VSFCF	200 Series Manifold x 2" Male Quick Coupler Standard Port Poly Valve	1
3	105-150G-H	1-1/2" EPDM Manifold Gasket for 200 Series Manifold Fittings	5
4	105-200125MPT	2" Manifold x 1-1/4" MPT	1
5	105-200150MPT	2" Manifold x 1-1/2" MPT	1
6	105-200BRB	2" Manifold x 2" HB	2
7	105-200MPT	2" Manifold x 2" MPT	1
8	105-200SWP90	2" Manifold Sweep—90 Degree	1
9	105-FC200	2" Manifold Clamp	5
10	106-200CAP	2" Cap	1
11	109-200MLS-20M	2" Manifold Y Strainer - 20 Mesh w/ 5/16" bolt holes for mounting	1
12	280-200-ENF	2" Enforcer Fertilizer Solution Hose	20'
13	300-050508-5	5/16" x 5-1/2" Hex Head Bolt - G5	2
14	304-060100	Carriage Bolt - 3/8" x 1" - G5	4
15	323-05	5/16" Flange Nut	2
16	323-06	3/8" Flange Nut	4
17	330-05	5/16" Flat Washer	2
18	350-TC231	T-Bolt Hose Clamp - 2.31 - 2.62" Diameter	2
19	400-2605Y1-GN	Universal Fill Kit Strainer Mount	1
20	400-3177Y1-GN	JD 1770 Fill Kit Strainer Mounting Bracket	1

\*Fittings included for 1-1/4", 1-1/2" or 2" tank opening.



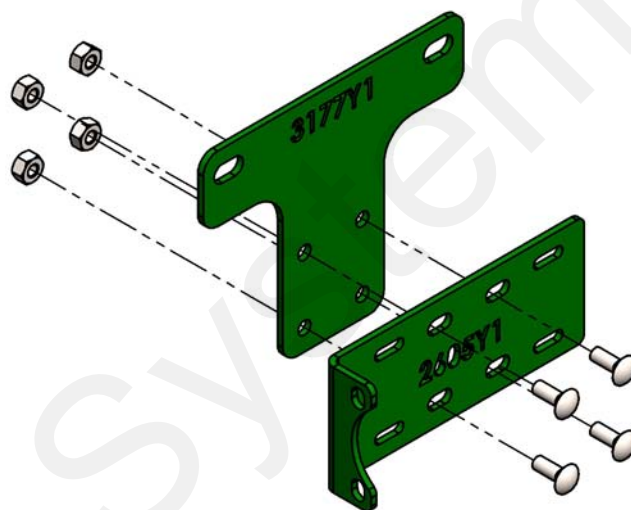
# Step by Step Instructions

## Kit: 520-00-101710

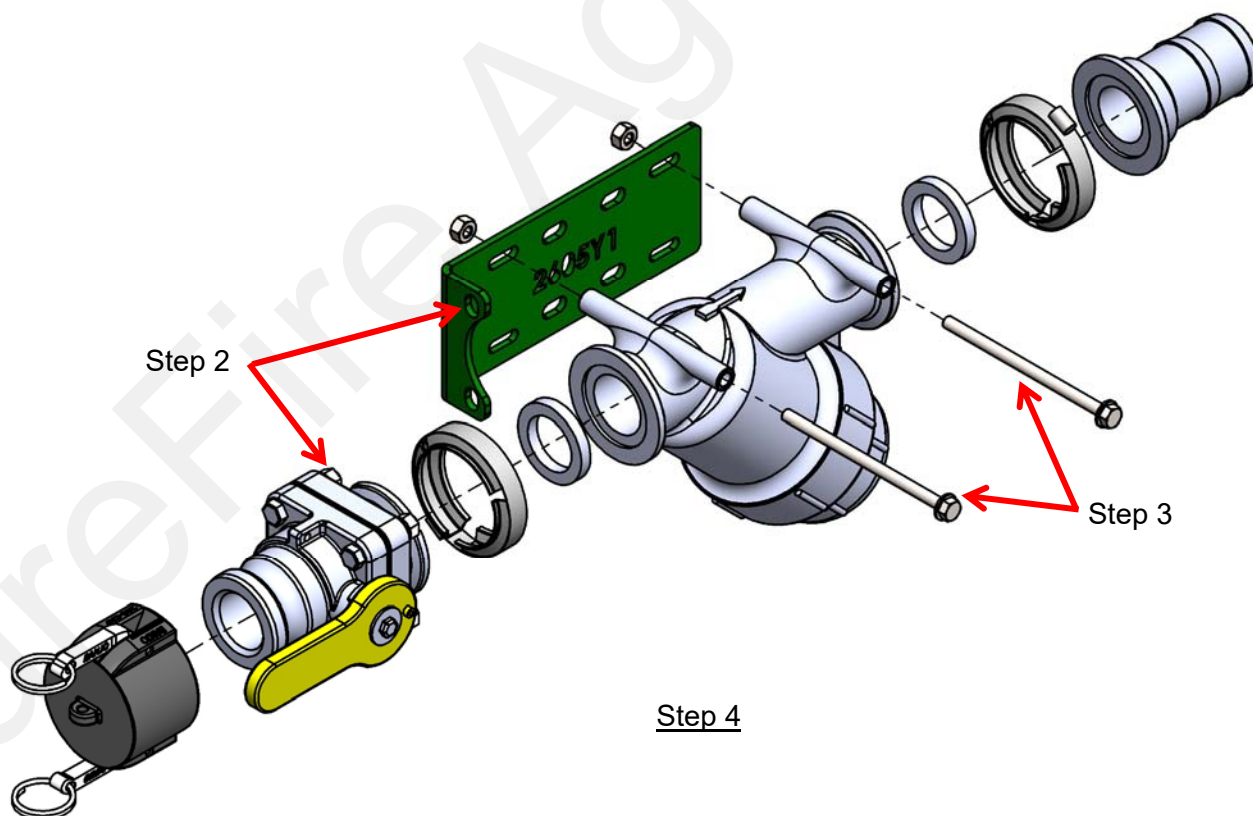
**520-00-101710 Fill Kit mounting bracket is designed to work with 1770NT and 1775NT CCS planters, as well as DB60 and DB90 planters.**

### Strainer Assembly Mounting:

1. Attach strainer mounting bracket to mounting bracket using four (4) 3/8" x 1" carriage bolts and flange nuts.
2. Remove nuts on Poly Valve as required to fasten valve to strainer mounting bracket. Re-install nuts and wrench tighten
3. Using two (2) 5/16" x 5-1/2" hex head bolts, flat washers and nuts, attach strainer to strainer mounting bracket. Re-tighten all bolts.
4. Pre-assemble fill kit components as shown.



Step 1

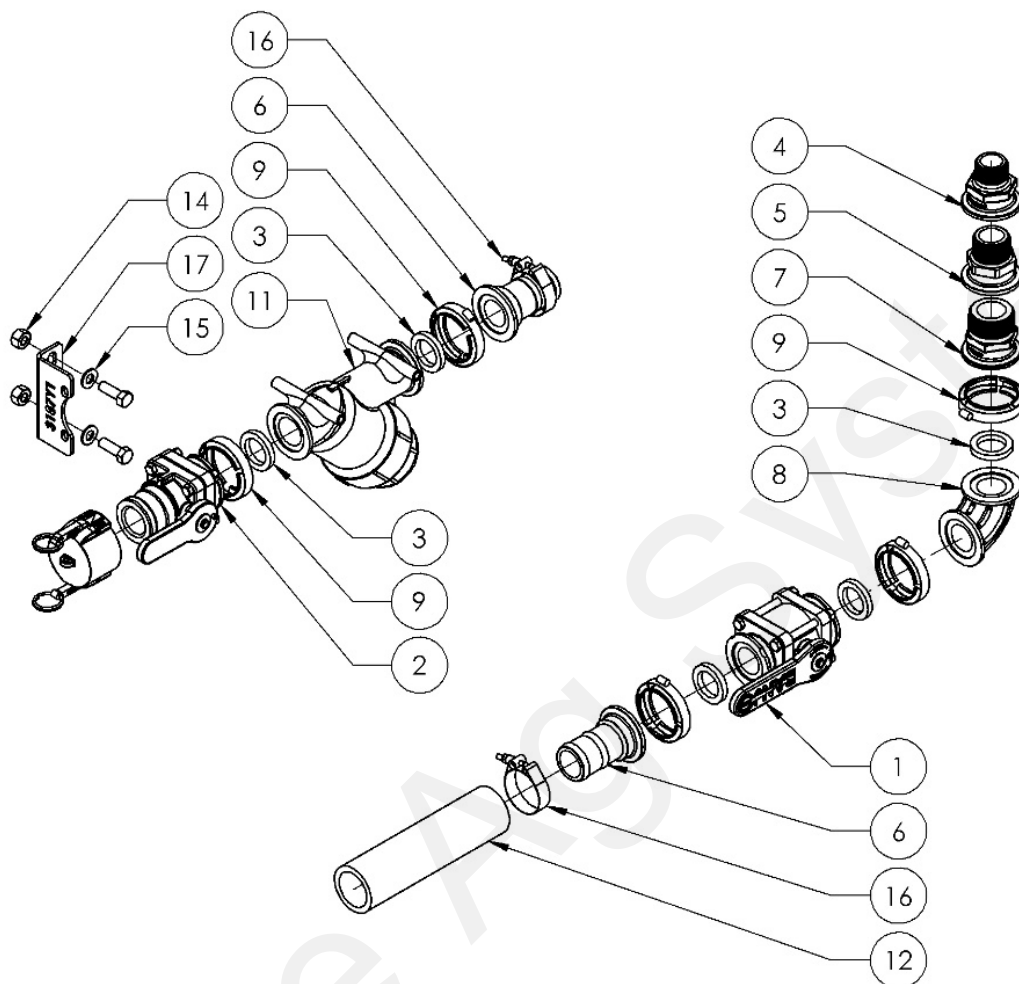


Step 4



# Parts List and Exploded View

## Kit: 520-00-101720



ITEM NO.	PART NUMBER	DESCRIPTION	QTY.
1	102-200MVCF	2" Manifold Standard Port Poly Valve	1
2	102-200VSFCF	200 Series Manifold x 2" Male Quick Coupler Standard Port Poly Valve	1
3	105-150G-H	1-1/2" EPDM Manifold Gasket for 200 Series Manifold Fittings	5
4	105-200125MPT	2" Manifold x 1-1/4" MPT	1
5	105-200150MPT	2" Manifold x 1-1/2" MPT	1
6	105-200BRB	2" Manifold x 2" HB	2
7	105-200MPT	2" Manifold x 2" MPT	1
8	105-200SWP90	2" Manifold Sweep—90 Degree	1
9	105-FC200	2" Manifold Clamp	5
10	106-200CAP	2" Cap	1
11	109-200MLS-20M	2" Manifold Y Strainer - 20 Mesh w/ 5/16" bolt holes for mounting	1
12	280-200-ENF	2" Enforcer Fertilizer Solution Hose	20'
13	300-080108-5	1/2" x 1-1/2" Hex Head Bolt - G5	2
14	323-08	1/2" Flange Nut	2
15	330-08	1/2" Flat Washer	2
16	350-TC231	T-Bolt Hose Clamp - 2.31 - 2.62" Diameter	2
17	400-3187Y1-GN	JD 1770 Rear Hitch Fill Kit Mounting Bracket	1

\*Fittings included for 1-1/4", 1-1/2" or 2" tank opening.





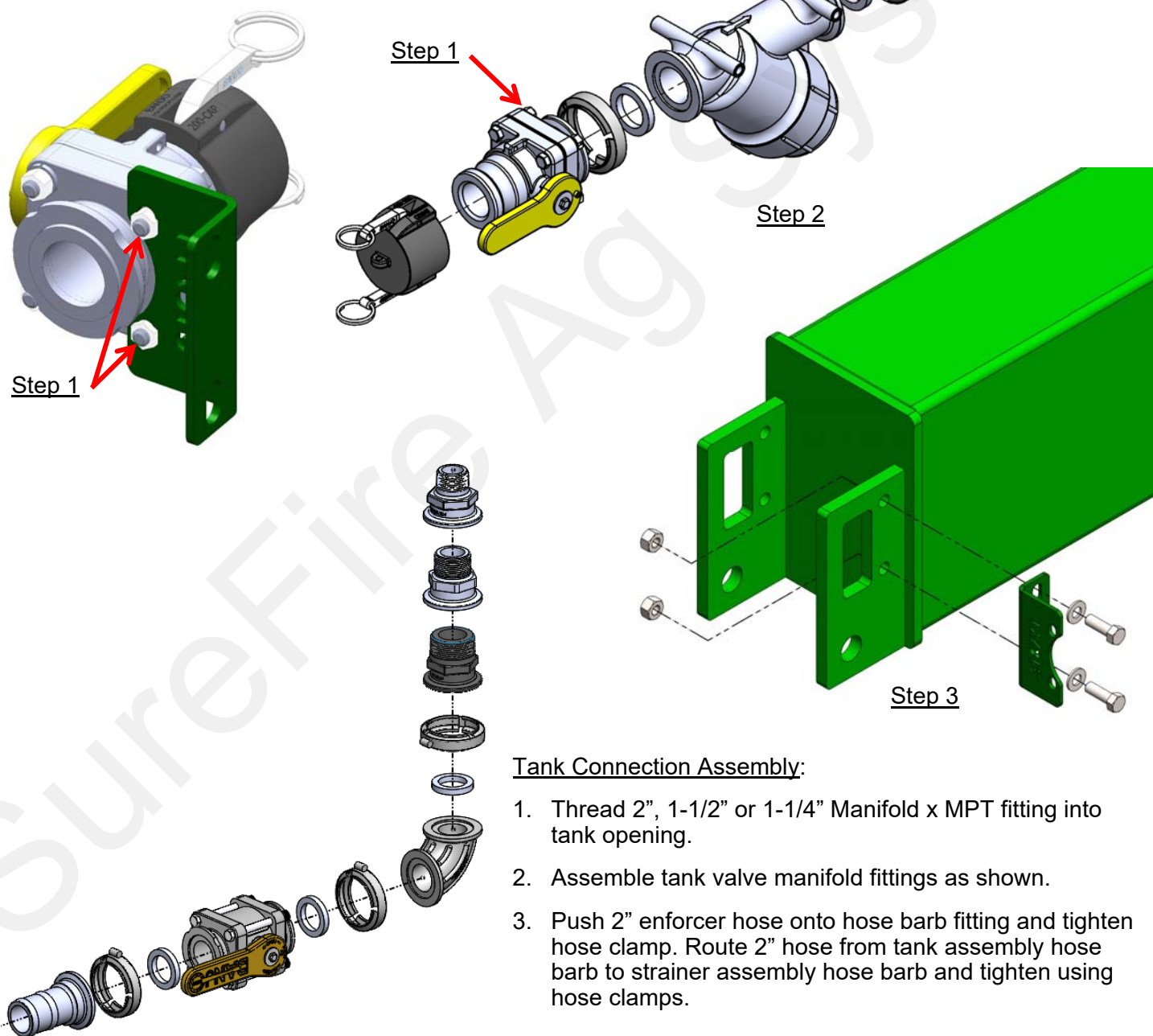
# Step by Step Instructions

## Kit: 520-00-101720

**520-00-101720 Fill Kit mounting bracket is designed to work with 1770NT and 1775NT, CCS or non-CCS planters with a rear hitch. On CCS planters with no rear hitch, use Kit 520-00-101710. This kit will not work when pulling**

### Strainer Assembly Mounting:

1. Remove nuts on Poly Valve as required to fasten valve to rear hitch mounting bracket. Re-install nuts and wrench tighten.
2. Pre-assemble fill kit components as shown.
3. Using two (2) 1/2" x 1-1/2" hex head bolts, flat washers and nuts, attach rear hitch bracket to rear hitch of planter as shown..



### Tank Connection Assembly:

1. Thread 2", 1-1/2" or 1-1/4" Manifold x MPT fitting into tank opening.
2. Assemble tank valve manifold fittings as shown.
3. Push 2" enforcer hose onto hose barb fitting and tighten hose clamp. Route 2" hose from tank assembly hose barb to strainer assembly hose barb and tighten using hose clamps.

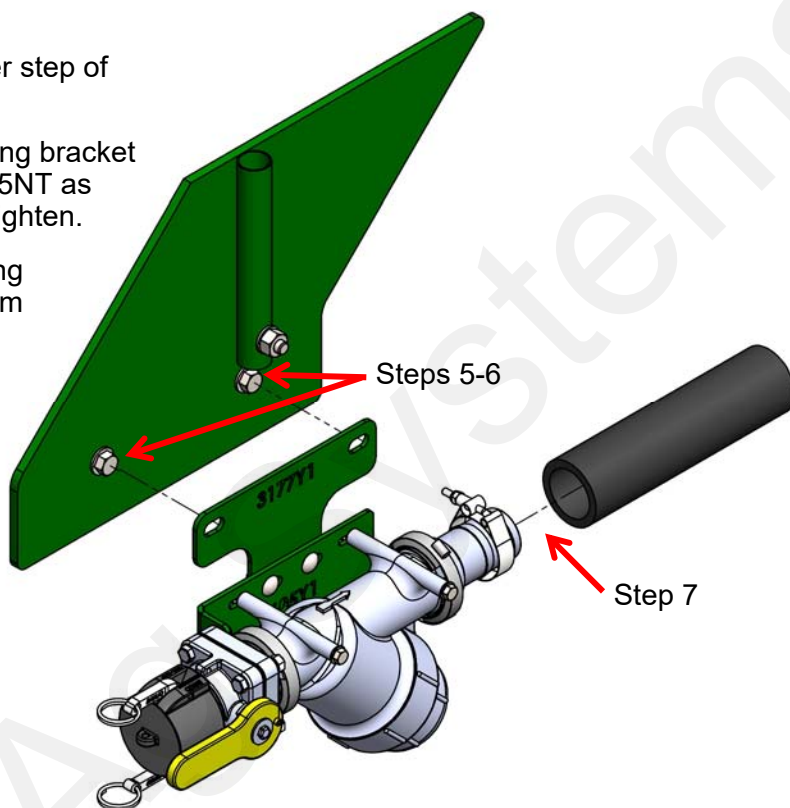


# Step by Step Instructions (cont)

## Kit: 520-00-101710

### Strainer Assembly Mounting (cont):

5. Remove existing bolts that fasten the lower step of the rear platform steps.
6. Mount fill kit strainer assembly and mounting bracket to rear step of John Deere 1770NT or 1775NT as shown right. Re-install bolts and wrench tighten.
7. Push 2" enforcer hose onto hose barb fitting and tighten hose clamp. Route 2" hose from tank assembly hose barb to strainer assembly hose barb.



### Tank Connection Assembly:

1. Thread 2", 1-1/2" or 1-1/4" Manifold x MPT fitting into tank opening.
2. Assemble tank valve manifold fittings as shown.
3. Push 2" enforcer hose onto hose barb fitting and tighten hose clamp. Route 2" hose from tank assembly hose barb to strainer assembly hose barb and tighten using hose clamps.

